



# **Spare parts list**

## **Hydraulic Core Drills**

### **COR 5, COR 15**





**2008-11**

**No. 3392 5164 01**

© Copyright Chicago Pneumatic Construction Tools  
STOCKHOLM • SWEDEN



## Introduction

Welcome! Protect your investment in the world's finest hydraulic tools. Use genuine CP replacement parts.

The purchase of replacement parts for your CP tools deserves the same good judgment that resulted in the purchase of the tools themselves. Each genuine CP part is made from carefully selected and inspected material, subjected to sophisticated machinery and finishing processes and heat-treated to produce just the right combination of hardness, ductility and impact resistance for its intended use. Each part is identical to, and made concurrently with, parts used in production tools.

The use of parts other than genuine CP replacement parts can lead to substandard performance, early failure, possible damage of other parts and, in some instances, unsafe conditions.

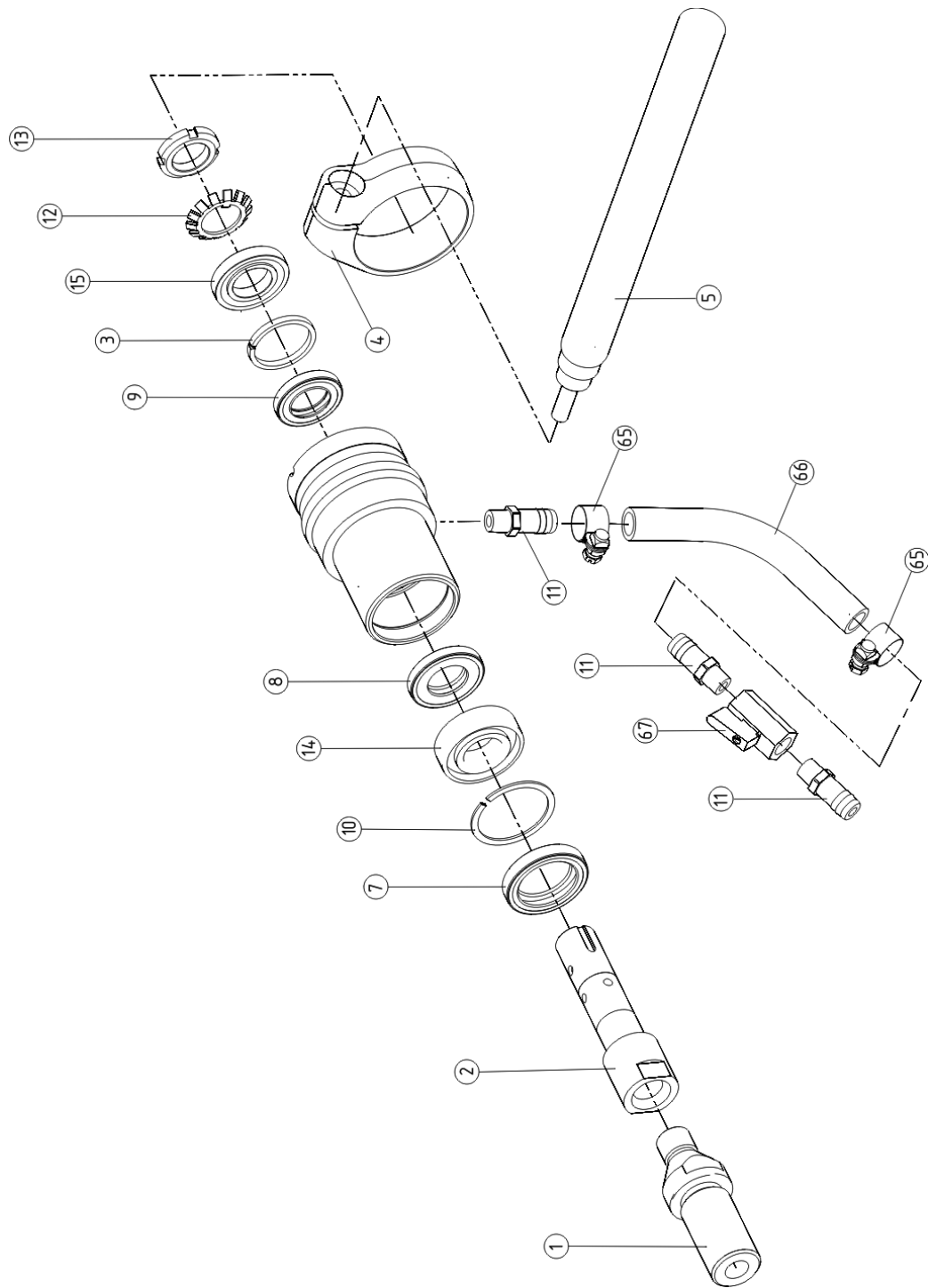
Use only authorized parts. Any damage or malfunction caused by unauthorized parts will not be covered by the Warranty or Product Liability.

Any machine modification not approved by Chicago Pneumatics may result in serious injuries to yourself or others.

To reduce the risk of injury, read and understand the relevant safety and operating instructions before operating the machine.

Before undertaking any maintenance or changing the working tool on hydraulic machines, always switch off the hydraulic oil supply and bleed the machine by activating the start and stop device. Then disconnect the hydraulic hose from the machine.

The CP COR 5 and COR 15 hydraulic core drills are sturdy and reliable tools designed for working together with CP hydraulic power packs.

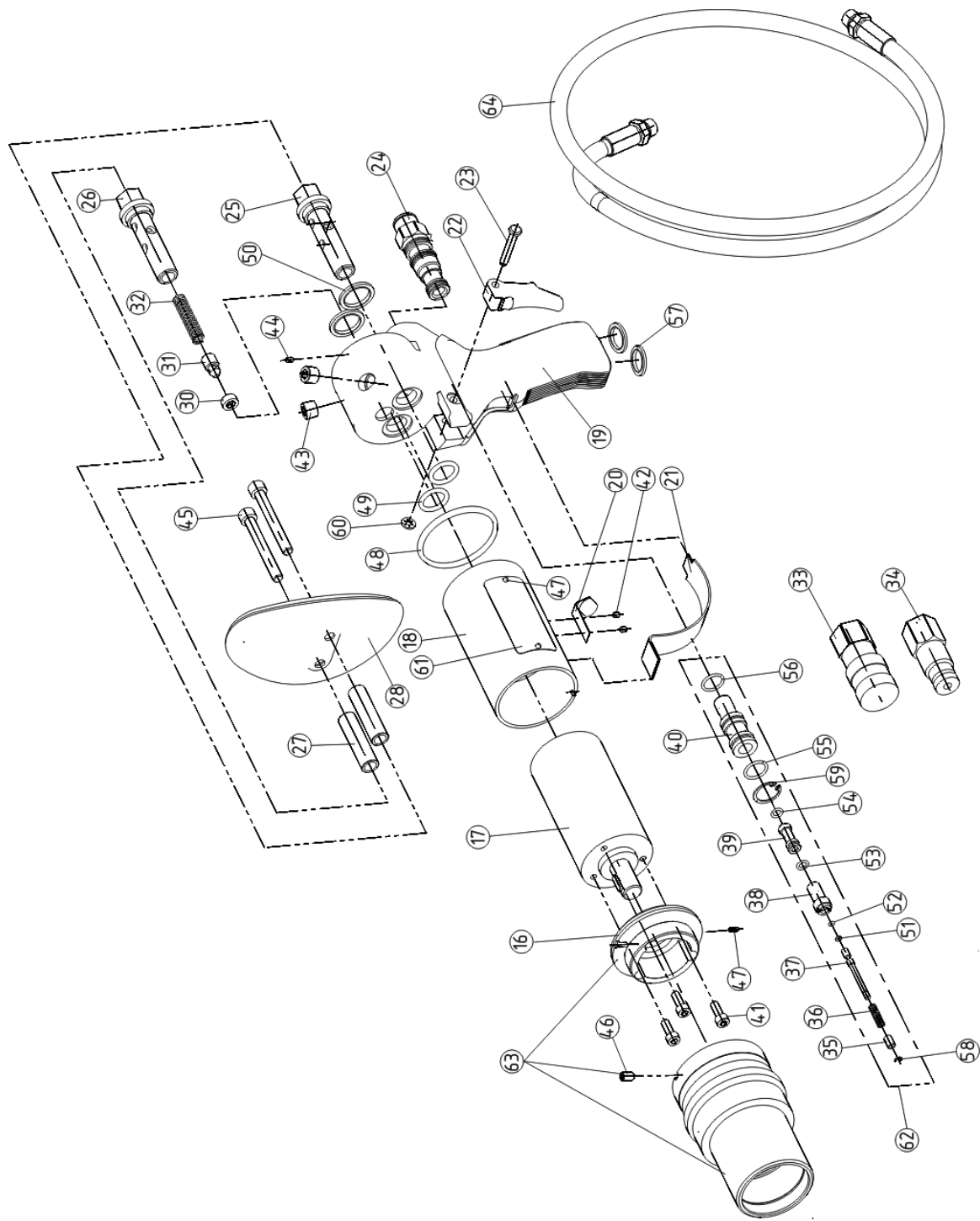


**A**



No.	Part Number	Quantity	Description	
1	3378 5120 64	1	Adaptor	½" BSP x 1-1/4 UNC
2	3378 5122 72	1	Shaft	
3	3378 5120 22	1	Spacer	
4	3376 6081 64	1	Handle ring	
5	3376 6080 05	1	Handle	Front, with sleeve
7	3376 1007 21	1	Dust seal	ø35xø52x7
8	3376 1007 20	1	Shaft seal	ø25xø47x6
9	3376 1007 19	1	Shaft seal	ø25xø42x6
10	3378 5120 21	1	Retainer	SB 52
11	3371 8097 46	3	Hose connection	¼" BSPT x ½" hose barb
12	3378 5122 77	1	Tab washer	
13	3378 5122 73	1	Lock nut	
14	3378 5120 17	1	Bearing	Front
15	3378 5120 18	1	Bearing	Rear
65	3377 0007 90	2	Hose clip	ø21/15
66	3376 6081 60	1	Water hose	½"
67	3378 5120 58	1	Ball valve	¼" BSPT female

**A**



**B**



No.	Part Number	Quantity	Description	
17	3371 8177 46	1	Motor	For COR 5
17	3378 5120 96	1	Motor	For COR 15
18	3376 6081 32	1	Tube	For COR 5
18	3376 6081 31	1	Tube	For COR 15
19	3376 6080 09	1	Handle	Main, w. rubber coating
20	3376 6080 11	1	Spring	Flat, w. trigger button
21	3376 6080 06	1	Bracket	Protection, w. trim edge
22	3376 6081 50	1	Trigger	
23	3376 6081 34	1	Pin	
24	3376 6081 61	1	Relief valve 115 bar	For COR 5
24	3376 6081 62	1	Relief valve 127 bar	For COR 15
25	3376 6081 11	1	Hollow bolt	Right hand
26	3376 6081 12	1	Hollow bolt	Left hand f. check valve
27	3376 6081 21	2	Spacer	
28	3376 6080 10	1	Breast plate	With damping layer
30	3376 6081 24	1	Pipe plug	¼" bspt
31	3378 5120 15	1	Check valve	
32	3376 6081 63	1	Spring	
33	3371 8051 37	1	Quick-release coupling	Female
34	3371 8051 38	1	Quick-release coupling	Male
35	3378 5120 13	1	Bearing	
36	3378 5120 30	1	Spring	
37	3378 5120 10	1	Spool	
38	3378 5120 12	1	Guide	
39	3378 5120 11	1	Valve housing	
40	3376 6081 02	1	Trigger retainer	
41	3371 8177 26	3	Screw	M6x15
42	3378 0003 60	2	Screw	M5x6
43	3371 8131 41	2	Plug	bspt ¼"
44	3378 5120 42	1	Screw	M4x5
45	3378 3025 08	2	Screw	M8x65
46	3377 5007 18	1	Screw	M6x8
47	3378 5122 80	1	Taper pin	
48	3378 5122 79	1	O-ring	ø58x4
49	3378 5120 35	2	O-ring	ø18x3.5
50	3371 8057 14	2	Seal ring	Bonded seal ½" bsp
51	3378 5120 47	1	Stop ring	
52	3378 5120 37	1	O-ring	ø2x1.5



No.	Part Number	Quantity	Description
53	3378 5120 36	1	O-ring $\varnothing 6.3 \times 1.8$
54	3371 8177 57	1	O-ring $\varnothing 6 \times 2$
55	3377 0005 33	1	O-ring $\varnothing 16 \times 2$
56	3371 8207 26	1	O-ring $\varnothing 16 \times 1.5$
57	3377 0163 75	4	Seal ring Bonded seal $\frac{3}{8}$ " bsp
58	3378 5120 63	1	Circlip H4
59	3376 1007 44	1	Circlip J22
60	3376 6081 36	1	Washer Star-lock $\varnothing 5$
61		1	ID-tag Not delivered as spare part
62	3376 6080 03		Trigger complete Incl. fig. No. 35-40, 51-56, 58, 59
63	3376 6080 02	1	Bearing housing Incl. transition adaptor
64	3371 8030 76	2	Hose Hydraulic, 2x3/8 bsp male
	3376 6080 08		Seal kit Incl. fig. No. 7-9, 48-50, 52, 53, 55-57
	3371 8177 50		Motor seal kit For hydraulic motors only

## Optional tools and accessories

No.	Part Number	Quantity	Description
	3371 8090 02		Water kit With pressure tank
	3371 8077 74		Adaptor $\frac{1}{2}$ " BSP x $\frac{5}{8}$ UNC
	3371 8077 68		Chuck kit For wood drilling max. 13 mm
	3378 0050 61		Diamond core bit $\varnothing 62$ mm
	3378 0050 62		Diamond core bit $\varnothing 82$ mm
	3378 0050 63		Diamond core bit $\varnothing 102$ mm
	3378 0050 64		Diamond core bit $\varnothing 112$ mm
	3378 0050 65		Diamond core bit $\varnothing 132$ mm
	3378 0050 66		Diamond core bit $\varnothing 152$ mm
	3378 0050 67		Diamond core bit $\varnothing 162$ mm
	3378 0050 68		Diamond core bit $\varnothing 200$ mm









**2008-11**

**No. 3392 5164 01**

© Copyright Chicago Pneumatic Construction Tools  
STOCKHOLM • SWEDEN

**Chicago Pneumatic Construction Tools**